

ATARI® 2600® Game Manual

# IKARI WARRIORS



You are a member of those elite combat specialists, the Ikari Warriors. Your buddy and you are on a special mission behind enemy lines, and you've been sleeping, eating, and breathing jungle combat for the last two weeks. You're tired, but that never affects your razor-sharp judgment and your will to survive.

Your main weapons are machine guns, grenades, and your own cunning in the face of danger. Sometimes you'll have a tank at your disposal, which comes in handy when enemy fire is particularly brutal.

You move swiftly through the jungle, wading through rivers and resting from time to time within the ruins of bombed-out buildings. You're running out of ammunition and grenades, but you know the battle can't last forever. Sooner or later, one side is going to emerge victorious. Let's just hope it's yours!

## Getting Started

1. With your TV switched on, insert the Ikari Warriors cartridge into your Atari 2600 (or 7800™) as described in your owner's manual.
2. Connect a controller to the left controller port. In two-player Ikari Warriors, connect a controller to each controller port.
3. If you are using an Atari 2600, use the **TV TYPE** switch to select color or black and white.
4. Switch on your console. The Ikari Warriors title screen appears.
5. To select one or two player Ikari Warriors, press **SELECT** or move the controller up and down to highlight the desired option. To select the highlighted option and begin the game, press the fire button or **RESET**.
6. To return to the opening screen and restart the game with the currently selected options, press **RESET**.

# Jungle Warfare!

## Playing the Game

Ikari Warriors is a one or two-player game of survival. You and your partner move behind enemy lines in hopes of wiping out the enemy. You begin the game with 50 grenades, 99 rounds of ammunition, and 3 lives. If you're lucky you can capture a tank to protect you from enemy fire.

Move your controller to maneuver through the jungle. Your main weapons are machine guns and grenades. To fire bullets and tank shells, press the fire button. To toss grenades, hold down the fire button for one or two seconds until the grenade launches.

Watch your bullet and grenade supplies carefully. Pick up new supplies before you run out. To pick up new supplies, simply walk over a supply icon. There are no icons that up-grade your fire power. (See **Items**.)

The tank, which moves only on dry land, provides safety from enemy bullets. To enter the tank, move your player onto the top of the tank.

The tank can be destroyed by enemy grenades. If the tank sustains damage while you are inside, you go with it. To exit the tank, hold down the fire button for one or two seconds. Press the fire button to fire shots from the tank.

You must pick up fuel along the way to keep the tank moving. The tank explodes if it runs out of gas, so don't miss the energy supply icons!

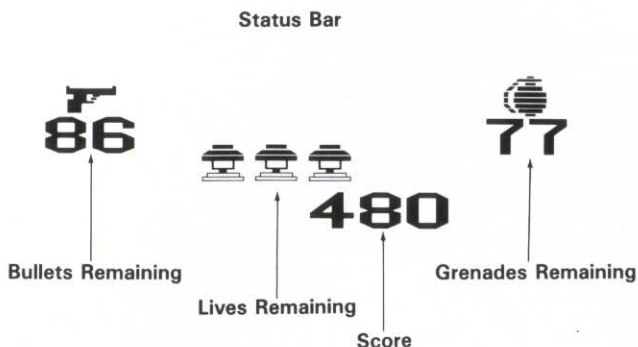
In your journey through the jungle, you will occasionally encounter a river or the sea. You will have to cross the water in order to continue. You can still fire while you are in the water.

If you come into physical contact with an enemy soldier you lose a life. You can hide behind rocks and rubble to avoid enemy gunfire. However, you will still be vulnerable to their grenades, so watch out!

Each time the enemy makes a successful hit, you lose a life. You receive a bonus life every 10,000 points. The game is over when you lose your last life. To win the game, you must rescue the colonel being held captive by the enemy.

## Screens

Game play takes place on the Action screen. The Status bar displays game information.



**Bullets** displays the number of rounds remaining.

**Grenades** displays the number of grenades remaining.

**Lives Remaining** displays the number of lives you have left.

## Items

Walk or drive your tank over the icon labelled **S** to replenish your fuel and ammo supplies.

## **Strategy**

Conserve bullets and grenades.

Plan your attack carefully. Dash in quickly, shoot, and back off before the enemy has a chance to aim and shoot back!

If you come into contact with an enemy soldier you lose a life.

Learn enemy locations and anticipate enemy attacks.

Run over enemy soldiers with your tank. It saves ammo!

## Scoring

The following table shows the number of points you will receive for destroying enemy units and rescuing the colonel.

Enemy soldier .....	100 points
Helicopter .....	200 points
Enemy tank .....	200 points
Bunker .....	300 points
Gate .....	300 points
Buildings .....	200/300 points



Atari Corporation is unable to guarantee the accuracy of printed material after the date of publication and disclaims liability for changes, errors, or omissions. Reproduction of this document or of any portion of its contents is not allowed without the specific written consent of Atari Corporation.

Atari, the Atari logo, 2600, and 7800 are trademarks or registered trademarks of Atari Corporation. Ikari Warriors is a registered trademark of SNK Corporation.

Copyright © 1987, SNK Corporation. All rights reserved.

Copyright © 1990, Atari Corporation, Sunnyvale, CA 94089-1302.  
All rights reserved.

Printed in Hong Kong

G. C. 10. 1990

C300016-177 Rev. A