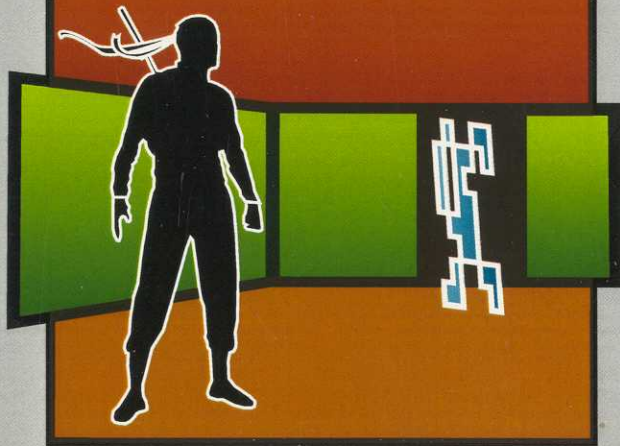


THE LAST NINJA



STORY



You are the Last Ninja. Hunted to extinction by the Emperor, you've stood alone against his army. After many long battles, you have driven the

Emperor to his maze garden for refuge. You must hunt him down and destroy him to rebuild your proud heritage.



CONTROLS

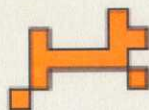
Move Player

Throw Ninja Star



ENEMIES

The Emperor has many guards which you must fight through to the final battle.

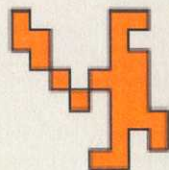


DOG

Small and quick. They make for a difficult target.

THUG WITH CLUB

Slow moving and simple to elude.

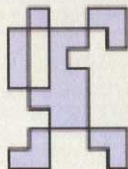


THUG WITH STARS

Quicker and now with throwing stars. Should be dealt with patiently.

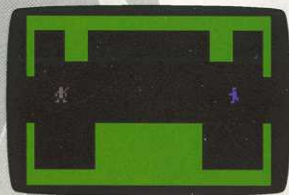
SAMURAI

Fast and aggressive, the samurai will hunt you relentlessly. The samurai also use a special Strike when you are close.





THE LAST NINJA



For use with Atari 2600 Video Game System

Audio Visual, Concept, and Program Copyright ©, 2007 Atari2600.com. The Last Ninja is a trademark of Atari2600.com. Printed in USA. All Rights Reserved. Designed and Programmed by Ryan Cope, Published by Atari2600.com

ATARI₂₆₀₀.COM