

CARTRIDGE INSTRUCTIONS

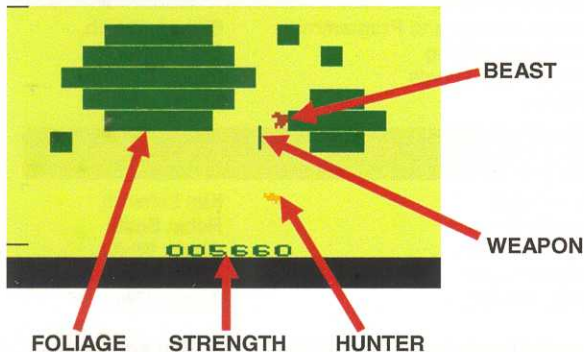
Prehistoric Times

STORY

Prehistoric Times follows the plight of a lone prehistoric man fighting for survival by hunting wily beasts in a sun-scorched forest. Nourish yourself on the carcasses of felled prey before setting off in quest of a mysterious god spoken of only in legend. Beware, no one has ever returned alive.

GETTING STARTED

Ensure game system is off when inserting or removing cartridge. Game begins when the system is powered up. If the game ends, press the controller button to reset.



USING YOUR CONTROLLER

Use the joystick controller to move in eight directions. Use the button to throw the spear and reset the game.

HOW TO PLAY

Prehistoric beasts roam and hide in the foliage of the forest. If you run into the forest, the beasts are scared away. Press the button to throw the weapon. You must collect your weapon to throw again. If the weapon hits the beast, it dies. Collect the flesh by using the weapon to cut the meat. Strength is shown by the number at the bottom of the screen. If you feel the hunter is strong, you may continue on a quest.

TIPS

Watch the beasts and learn their patterns. Be patient, you will need much strength for the trials ahead. Lava is deadly, touching it means instant death. Your path may change without notice.

CREDITS

Concept, Design and Programming
Artwork, Packaging
Cartridge and Labels
Producer

Blake Leftwich
Seth Robinson
Randy Crihfield
Scott Leftwich

THANKS

Kris Leftwich
Steve Smith
Mary Robinson
Matthew Taylor
James Tillman

Kim Leftwich
Robin Smith
Chuck Whitby
Evan Jackson
Jordan Pike

A special thanks to the helpful folks on the Atari Age forums, to Fred X. Quimby, creator of Batari, and to all the classic game collectors and enthusiasts for inspiring and supporting us.