



STEEPLECHASE



VIDEO GAME INSTRUCTIONS

GAME SCENARIO

Mount up ready to go ride your thoroughbred up, down, around and through a zany steeplechase course. Challenge the hedges, puddles and fences on your way to the world's fastest time.

You're aided by unique split-screen imaging that gives you a full perspective of the course. See all the action from both top and side views.

The action gets faster and faster. You test every video skill you know, plus invent a few new ones, but stay on that horse you will

SETTING UP

Always insert cartridge with console power off.

Securely connect left joystick. Hold joystick with "Jump" ("Fire") button on your upper left corner as shown.

When power to console is turned on, the first scene of the game will be displayed on the TV screen. You will see the number 1 at the lowest part of the screen which tells the player which game level is selected.

Game Select Switch

Steeplechase is a 4 part game. The player can select any one of four starting levels by depressing game select switch. If the game select switch is depressed and held down, the level selection will cycle automatically. The higher the level, the more difficult the game.

Right Difficulty Switch

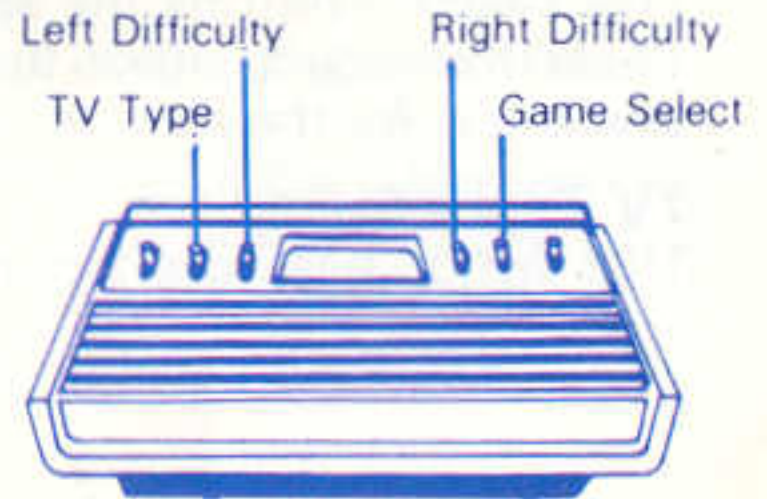
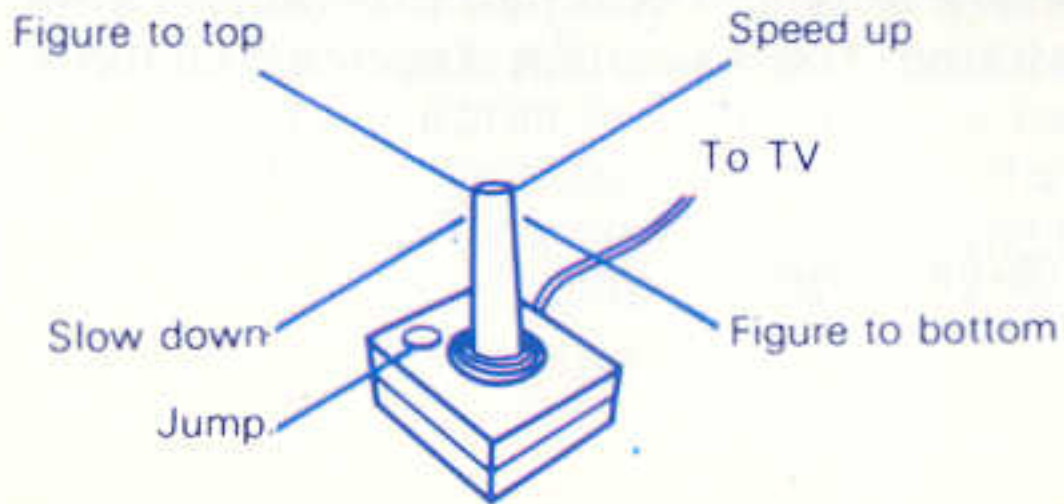
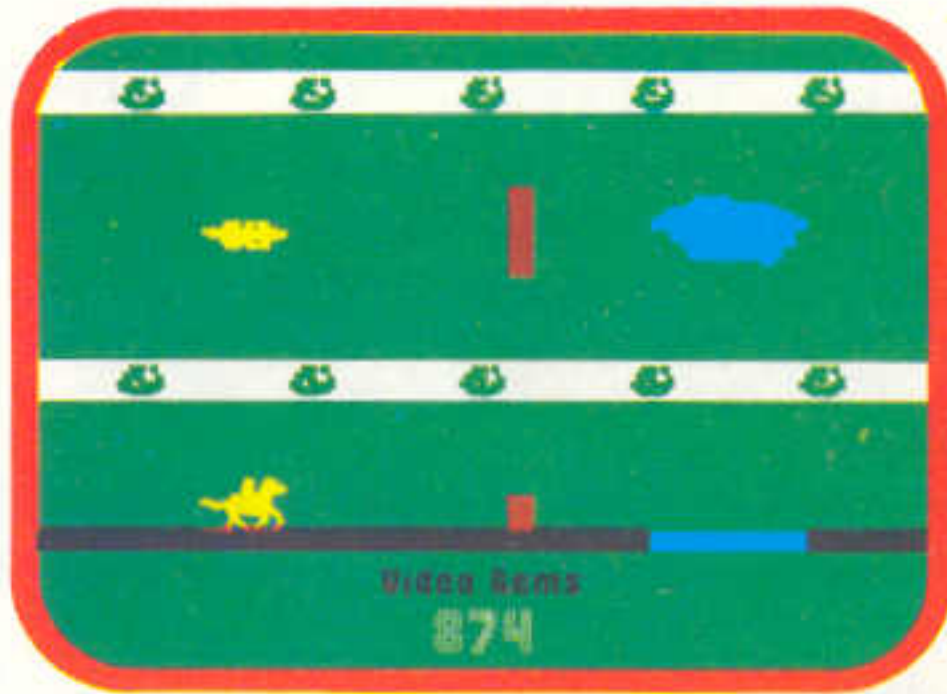
This switch can be used to stop the game (time out) at any time by placing it in the B position. To continue the game play, return the switch to A position.

Left Difficulty Switch

This switch controls the speed rate in which you can manoeuver your horse from side to side in the top frame. The A position is normal and the B position is for the experts.

TV Types Switch

This switch has no effect on this cartridge.



PLAYING

To start the game press the button on the joystick (or the game reset button on the console). Steeplechase is played with an unique split screen image that allows you to judge the height, width and breath of approaching objects. You manoeuver over, through and around these objects with the use of your joystick as shown.

The top portion of the screen indicates the number and location of the obstacles.

The bottom screen tells you the height of the obstacles. As you manoeuver your horse in front of an oncoming obstacle, the height of that obstacle is shown in the bottom screen.

The object of the game is to complete the Steeplechase race course in the fastest possible time.

After you have mastered your fastest time on level one, you can proceed to levels 2, 3, and 4 where the speed increases and the race course gets longer and more difficult.

SCORING

The lowest elapse time for completion of the course is the winner.

Level 1

Proficiency Ratings

Scoring	Ratings
25 sec	poor
20 sec	good
17 sec	excellent
13.5 sec	great

High Score Memory

At the end of each game the lowest elapse time scored will be shown at the bottom of the screen alternating with the VIDEO GEMS logo. The high score memory keeps the lowest recorded time during active play. Turning the main power off will result in the loss of this memory.

HELPFUL HINTS

You can pull the joystick to the left to slow the horse down.

Have fun, good luck and look for other challenging VIDEO GEMS products.

WARRANTEE

In lieu of any other expressed warrantee by distributors or retailers Video Gems warrants to the original consumer purchaser of this Video Gems game cartridge that it will be free from defects in materials and workmanship for 90 days from the date of purchase. If this cartridge is discovered to be defective within the warranty period, Video Gems, at its option, will repair or replace this cartridge free of charge, upon receipt of the cartridge, postage prepaid, with proof of date of purchase, at the following location:

VIDEO GEMS

G.P.O. Box 13014, Hong Kong.

This warranty is limited to electronic and mechanical parts contained within the cartridge. It is not applicable to normal wear and tear and is not applicable and shall be void if the defect has arisen through, or the cartridge shows signs of, misuse, excessive wear, modifications, or tampering.

SCORING

The lower the score the better the performance of the program. A score of 100 indicates that the program is performing at the level of a typical commercial program. A score of 50 indicates that the program is performing at the level of a typical educational program. A score of 25 indicates that the program is performing at the level of a typical high-quality educational program. A score of 10 indicates that the program is performing at the level of a top-quality educational program. A score of 5 indicates that the program is performing at the level of a top-quality educational program.

VIDEO GEMS

VIDEO GEMS is a series of educational programs that are designed to help students learn about the world around them. The programs are presented in a format that is easy to understand and fun to watch. Each program is presented by a professional actor who is trained to deliver the material in a clear and concise manner. The programs are available in both English and Spanish.

PRESENTED BY



©1983 ALL RIGHTS RESERVED