

Sears

TELE-GAMES[®]

NIGHT DRIVER[®]

GAME INSTRUCTIONS



NIGHT DRIVER is a registered trademark of ATARI, INC.

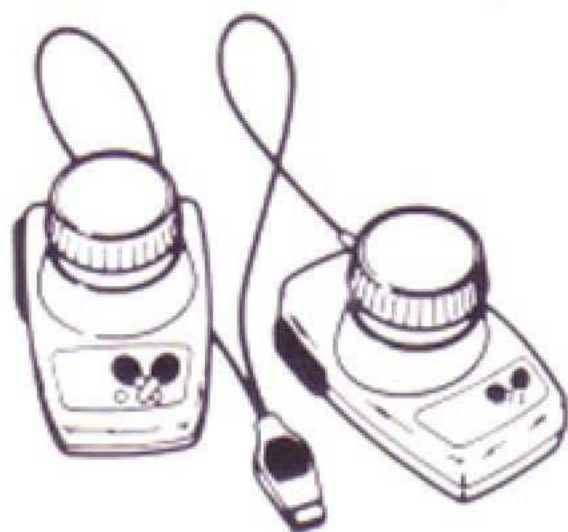
FOR 1 PLAYER

GAMES

SEARS, ROEBUCK AND CO.

4975119

Use your Standard Paddle Controllers with this Tele-Games® Cartridge. Be sure the controller cable is firmly plugged into the **left controller** jack at the rear of your Video Arcade™. Hold the controller with the red button to your upper left toward the television screen.

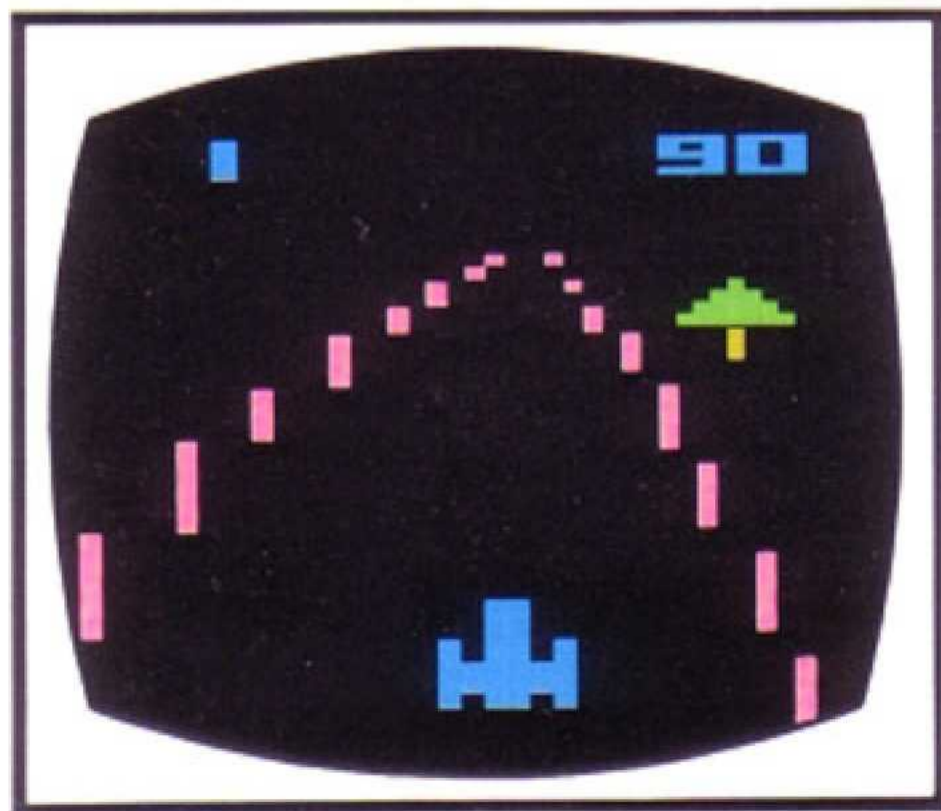


Since **NIGHT DRIVER®** is for one player, you must use the Paddle Controller connected to the left cable. The controller connected to the right cable will not work. *See page 4 of your Owner's Manual for other questions concerning the Video Arcade.*

NOTE: Always turn the console **OFF** when inserting or removing a game cartridge. This will protect the electronic components and prolong the life of your Video Arcade.

HOW TO PLAY

You're in the drivers seat and the track is just ahead of you on the television screen. Your car is permanently fixed at the bottom of the screen (see diagram). All you have to do is accelerate and steer the car through one of four tracks (see **USING THE CONTROLLERS**). Each time you veer off the track and hit one of the pylons or hit an oncoming car, a simulated crash scene will appear on the screen.



It is a good idea to quickly read through these instructions so that you won't miss any important details. Be sure to read what happens when you change the position of the **SKILL** switches (see **HANDICAP**), as well as how each game number represents a slightly different game (see **GAME VARIATIONS**).

TO BEGIN PLAY

Console Controls

After inserting the cartridge, turn your television on and flip the console **ON**. Depress the **GAME SELECT** switch to choose the game you wish to play. The game number is displayed at the upper left corner of the screen and will change each time the **GAME SELECT** switch is depressed.

To start a game, depress the game **RESET** switch. This switch will also reset a game to the starting point at any time.

USING THE CONTROLLERS

The knob on your Paddle Controller is your steering wheel, and the red button is your accelerator. Be sure to hold the controller with the red button on the left. You must press the button to accelerate and start the action.

Turn the controller knob to the right to steer the car to the right, and left to steer left. Try to avoid hitting the pylons on either side of the road, as well as oncoming cars. Your initial tendency will probably be to "oversteer" the car, which will cause you to crash. However, don't be discouraged if this happens. With time and practice you will get the knack of it, and eventually become quite skilled.

NOTE: When first starting out don't use maximum acceleration throughout the course of a track. Instead, let off slightly or even all the way as you wind through tight turns and difficult spots on the track. This should help you to avoid crashes and low scores.

HANDICAP (Skill Switch)

The **RIGHT PLAYER SKILL** switch on the console controls the maximum speed at which your car will travel. In the **EXPERT** position, the car will travel the fastest. In the **NOVICE** position, the maximum speed will be slower. (Beginners should start with the **RIGHT PLAYER SKILL** switch in the **NOVICE** position.)

The **LEFT PLAYER SKILL** switch may or may not act as a warning device, depending on its position. In the **EXPERT** position, oncoming cars **WILL NOT** honk before they appear on the screen. In the **NOVICE** position, oncoming cars honk just before they appear.

GAME VARIATIONS

Games 1, 2, 3 and 4 are timed. At the beginning of each of these games, a "clock" will begin counting down from 90 (seconds) at the upper right corner of the screen.

Games 5, 6, 7 and 8 have no time limit. They may be played for an indefinite period of time and there will not be a clock counting down on the screen.

Games 1 and 5 have the easiest track (**NOVICE**) and should be used by beginning players. Games 2 and 6 have the medium difficulty track (**PRO**). The **EXPERT** track in Games 3 and 7 is more difficult than the **NOVICE** or **PRO** tracks.

All of the tracks described so far (Games 1, 2, 3, 5, 6 and 7) are stored in the program memory of the game. So even though the **NOVICE**, **PRO** and **EXPERT** tracks are progressively more difficulty, each track will always follow a fixed course. This makes it possible for players to eventually memorize the track as their driving skill increases.

The **RANDOM** track, however (Games 4 and 8), follows a different course each time, making it challenging even for the most skilled players.

Use the **Game Matrix** at the back of this instruction booklet as a quick reference for game variations and game numbers.

SCORING

The object in all of the games is to obtain a high score. Scoring is done automatically by the computer as you travel through the course. As you pass certain spots (invisible to you) on the track, the computer automatically tallies one point to your score, which is displayed at the upper left corner of the screen.

In the games with no time limit (Games 5, 6, 7 and 8), your scoring possibilities are infinite.

Game Number	Track Description	Time/ Untimed
1	NOVICE (Easy)	90 SECONDS
2	PRO (Medium)	90 SECONDS
3	EXPERT (Difficult)	90 SECONDS
4	RANDOM	90 SECONDS
5	NOVICE (Easy)	NO TIME LIMIT
6	PRO (Medium)	NO TIME LIMIT
7	EXPERT (Difficult)	NO TIME LIMIT
8	RANDOM	NO TIME LIMIT

NOW THAT YOU HAVE BEEN INTRODUCED TO THE WORLD OF SEARS TELE-GAMES® YOU'RE READY TO TRY THE NEWEST AND MOST EXCITING GAMES YET.

Here is a preview of the brand new Tele-Games® Cartridges. You'll want to add these challenging and entertaining new games to your Video Arcade™ library today.

CIRCUS Watch the clown. Catch him on the teeter-totter and score a point. Bounce him up to the balloons and score more points by popping red, white, and blue balloons. The more you pop, the more points you score. Eight game variations for 1 or 2 players.

NIGHT DRIVER¹ How safe is your night driving? The road is winding and dark. Avoid the hazards and stay on the road to achieve a high score. Fasten your seatbelt, and start your engine. A single player game with eight variations.

GOLF FORE! Watch out, it's the Tele-Games Golf course. Maneuver your golfer around our nine hole, 36 par course. But, beware of sandtraps, lakes, and trees. One or more can tee-off.

VIDEO CHESS¹ Capture your opponent's King and it's checkmate! Video Chess™ is a game of skill and strategy. Eight Handicaps (skill levels) provide a challenge to all players, beginners to experts. A game of tactics for 1 or 2 players.

SUPERMAN² It's a bird... it's a plane... no, it's SUPERMAN! You're CLARK KENT² of the DAILY PLANET² and it's up to you to jump into a phone booth, become SUPERMAN, and save the city of METROPOLIS². Remember, only LOIS LANE² can rescue you from the powers of KRYPTONITE². Play SUPERMAN alone or as a team of two.

ADVENTURE Adventure is a game of enchanted castles, magicians, dragons, and bats. Your task is to recover an enchanted goblet from the hands of an evil magician. Adventure is a one-player game with three variations.

FOOTBALL HUT ONE... HUT TWO... HIKE! With Tele-Games Football, you're the quarterback calling the offensive calls. And, on the defense you're in total control. KICK... PASS... RUN, it's a touchdown! Three action-packed games for 1 or 2 players.

BACKGAMMON Here's your chance to test your strategical sense. Play one of the oldest mideastern games. What better way to learn the popular game of Backgammon than to play with a computer? Then, try your strategy against your friends and family. Backgammon consists of eight versions for 1 and 2 players.

SPACE INVADERS³ It's up to you to protect our planet. Can you destroy the creatures from space before they destroy the earth? Score points by destroying the Space Invaders with your laser cannon. But be careful, they have weapons, too. There are 112 ways to play Space Invaders with 1 and 2 players.

1. TRADEMARK OF ATARI, INC.
2. TRADEMARKS © 1980 DC COMICS,
3. TRADEMARK OF TAITO AMERICA CORP.