

SHOOTIN' GALLERY™

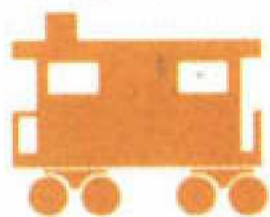
GAME PROGRAM INSTRUCTIONS



Step right up and take your best shots at a crazy carnival of hopping, jiggling, crawling, chugging, swinging, zipping, dancing, prancing targets. There's even a funny old-time train. Try the "Hotshot Challenge": a cuckoo grabs your ammo if you don't ding the clock in time, and targets speed up the more you hit 'em! Be the Fastest Gun in the West or East! Bang that caboose for a big score and a little circus music!

GAME OBJECTIVE

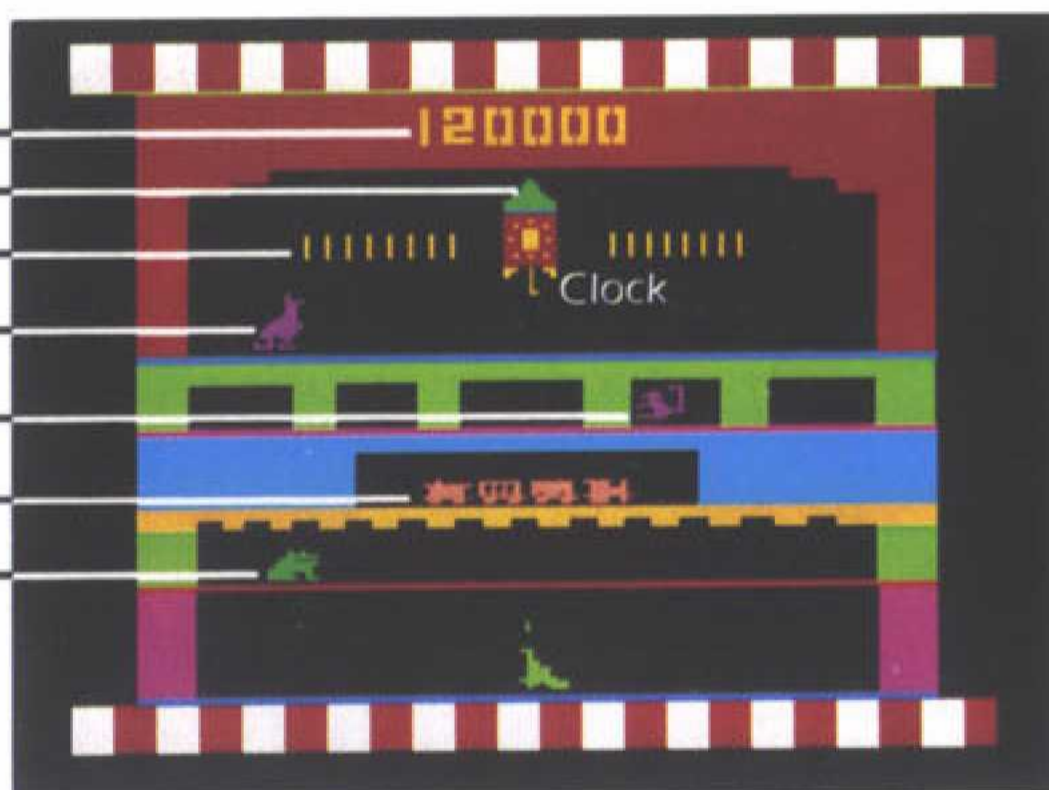
Get as many points as you can by hitting moving targets — **especially** these:



Aim and shoot at the most valuable ones you see. Hit targets on the bottom line to win extra shots. See if you can beat your own record score!

GAME PLAY

Score
16-Shot Bars
Remaining Shots
Big Score Targets
Monkey
Train
Extra Shot Targets

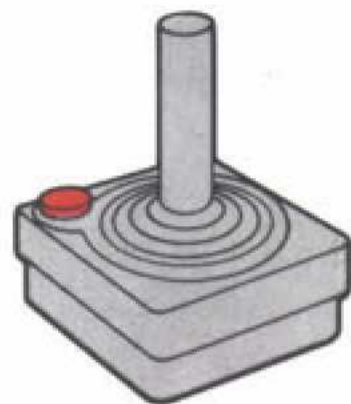


Only Some of These Targets Will Appear on Your Screen at the Same Time.

- ⊕ You start with 64 shots...
 - ⊕ Each little bar above the clock stands for 16 shots.
 - ⊕ Each big bar next to the clock stands for 1 shot.
- ⊕ Score 20,000...40,000...60,000...80,000 points:
 - ⊕ You earn 4 bonus shots at each level.
 - ⊕ PLUS an extra shot for each bottom-row target you've hit (maximum number of extras each time: 11).
- ⊕ You hear a musical salute...
 - ⊕ At the start of each game;
 - ⊕ When you hit the caboose;
 - ⊕ When you get your bonus shots.

HAND CONTROLS

- ⊕ Use **left** hand controller.
- ⊕ Use **joystick** to aim the gun. Position controller so the **red button** is in the upper left hand corner. Lean joystick to the left or right to move the gun.
- ⊕ **To shoot:** press red button.
- ⊕ Note: Don't push the joystick up when you press the button. If you do, the gun won't fire.



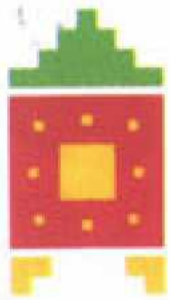
CONSOLE UNIT

- ⊕ Change game variation by pulling **GAME SELECT** switch.
- ⊕ Game number appears at top center of screen.
- ⊕ Pull **Game Reset** Lever to begin action.
- ⊕ To replay same variation after game is over, push joystick UP and press red button at the same time. Or, pull the RESET switch.

GAME VARIATIONS

GAME FEATURES

GAME #1	NO TIME LIMIT	ONE SPEED
GAME #2	NO TIME LIMIT	
GAME #3		ONE SPEED
GAME #4		



– means that all the targets move faster when your score reaches 20,000, 40,000 and 60,000 points! The game pauses while you get the extra shots you have won (up to 11), plus 4 bonus shots.

– means that you must hit the clock **before** all the spots on the face of the clock disappear. If you don't, the cuckoo takes away 4 of your shots. Keep an eye on the clock — save all your shots for shooting!

SCORING AND STRATEGY

GAME #1

("TARGET PRACTICE")

TARGETS

WHEN YOU SEE 'EM

POINTS



All the time

100

Clock



After you hit 1 monkey

2,000

Kangaroo Seal



After you hit 6 monkeys

3,000

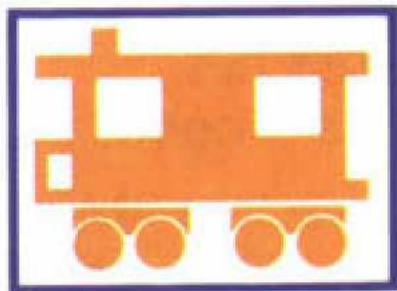
Penguin Squirrel



As he jumps through windows

500

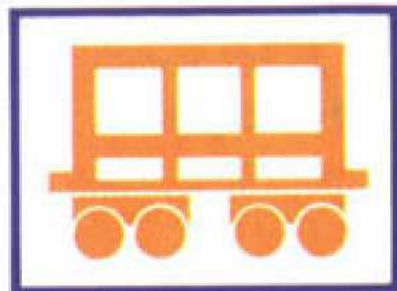
Monkey



Train caboose

Before you hit the engine

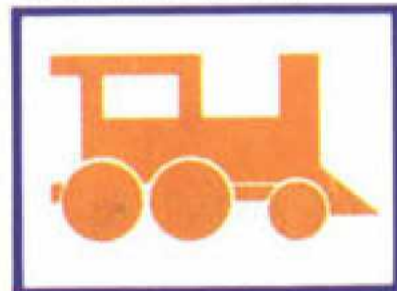
5,000



Train boxcar

Before you hit the engine

1,000



Train engine

After you hit any target

100



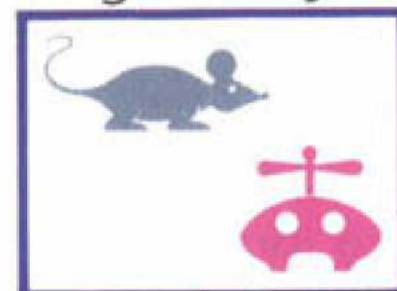
Snail Rabbit

As they run across bottom line 100
PLUS AN EXTRA SHOT *



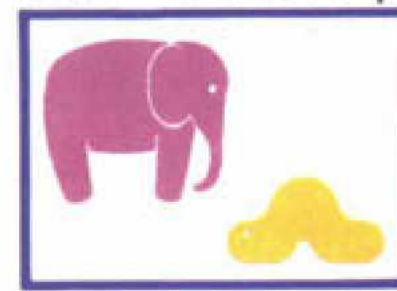
Frog Gullywhomper

After you hit 4 cabooses 500
PLUS AN EXTRA SHOT *



Rat Gumdrop

After you hit 6 cabooses 1,000
PLUS AN EXTRA SHOT *



Elephant Inchworm

After you hit 8 cabooses 1,500
PLUS AN EXTRA SHOT *

* Up to 11 extra shots, awarded when your score reaches 20,000, 40,000, 60,000 and 80,000 points — plus 4 bonus shots!

- ⊕ The whole train leaves the track when you hit the engine.
- ⊕ Hit any target and a new train will appear.
- ⊕ To get higher scores, hit the caboose and boxcars **before** you shoot the engine!
- ⊕ The game is over when all your bullets are gone.

GAME #2 ("SPEED-UPS")

SAME RULES AND SCORES AS GAME #1, WITH THESE SPECIAL FEATURES:



Kangaroo



Seal

- ⊕ You see 'em after you hit 2 monkeys.
- ⊕ The targets speed up at 20,000, 40,000 and 60,000 points.

GAME #3 ("CUCKOO WATCH")

SAME RULES AND SCORES AS GAME #1, WITH THESE SPECIAL FEATURES:

- ⊕ You must hit the clock before all the spots on the face of the clock disappear, or else the cuckoo will take away 4 of your bullets!



Kangaroo



Seal

- ⊕ You see 'em after you hit 3 monkeys.
- ⊕ The targets keep moving at the same speed.

GAME #4

(THE "HOTSHOT CHALLENGE")

SAME RULES AND SCORES AS GAME #1, WITH THESE SPECIAL FEATURES:

- ⊕ You must hit the clock before all the spots on the face of the clock disappear, or else the cuckoo will take away 4 of your bullets!



Kangaroo



Seal

- ⊕ You see 'em after you hit 4 monkeys.



Whole Train

- ⊕ To get a new train, you **must** hit the monkey.
- ⊕ The targets speed up at 20,000, 40,000 and 60,000 points.

BONUS AND EXTRA SHOTS

- ⊕ In every game the action pauses every 20,000 points (up to 80,000) to give you:
 - ⊕ 4 free bonus shots;
 - ⊕ An extra shot for each target you've hit on the bottom line.
 - ⊕ The maximum number of bonus and extra shots awarded at each "intermission" is 15.

WINNING TIPS

- ⊕ Always try to hit the caboose **before** you shoot the engine, to get more points.
- ⊕ In Games 3 and 4, remember to hit the clock in time. Save bullets!
- ⊕ You cannot hit the monkey while the gun is directly under the clock. Move gun to the left or right to hit the monkey.
- ⊕ You always get higher score points after you hit the monkey and the caboose several times, so concentrate on those targets first!

**IMAGIC VIDEO GAME CARTRIDGE
TWO YEAR LIMITED WARRANTY**

Imagic warrants to the original consumer purchaser of this Imagic video game cartridge that it will be free from defects in materials and workmanship for TWO YEARS from the date of purchase. If this cartridge is discovered to be defective within the warranty period, Imagic, at its option, will either repair or replace this cartridge free of charge, upon receipt of the cartridge, postage prepaid, with proof of date of purchase, at the following location:

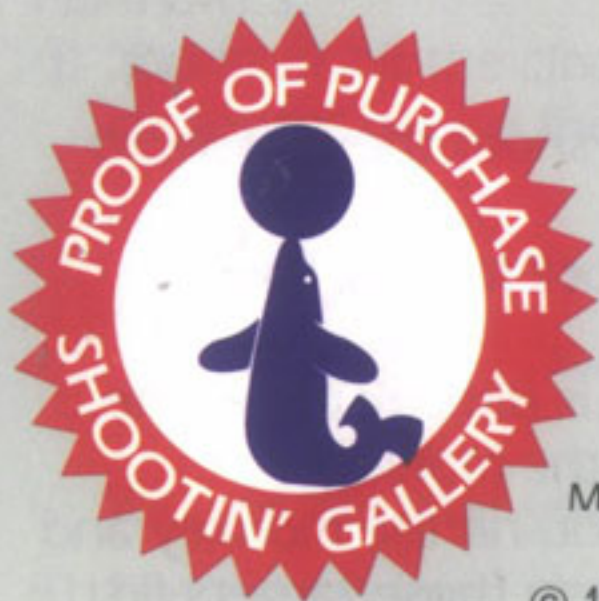
IMAGIC

Customer Services
1875 Dobbin Drive
San Jose, CA 95133

This warranty is limited to electronic and mechanical parts contained within the cartridge. It is not applicable to normal wear and tear and is not applicable and shall be void if the defect has arisen through, or the cartridge shows signs of, misuse, excessive wear, modifications, or tampering.

THIS WARRANTY IS IN LIEU OF ALL OTHER EXPRESS WARRANTIES OR REPRESENTATIONS. ANY APPLICABLE IMPLIED WARRANTIES, INCLUDING WARRANTIES OF MERCHANTABILITY AND FITNESS, ARE LIMITED TO A PERIOD OF TWO YEARS FROM THE DATE OF PURCHASE. IMAGIC IS NOT LIABLE FOR ANY SPECIAL, INCIDENTAL, OR CONSEQUENTIAL DAMAGES RESULTING FROM BREACH OF ANY EXPRESS OR IMPLIED WARRANTIES ON THIS CARTRIDGE.

Some states do not allow limitations on how long an implied warranty lasts or the exclusion or limitation of incidental or consequential damages, so the limitations or exclusions set forth above may not apply to you. This warranty gives you specific legal rights, and you may also have other rights which vary from state to state.



IMAGIC

Consumer Affairs
Kathleen Boothe
P.O. Box 31001
Los Gatos, CA 95030

Designed by Dennis Koble
Screen Graphics assisted by
Michael Becker and Wendy Szeto

© 1983 IMAGIC. All Rights Reserved

Printed in USA

Model No. 700021-1A