

OFFICIAL RULES

ADVENTURE²

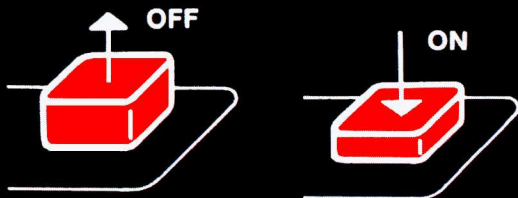


COLD CASE!

Can Tom Snow save the citizens of the North Pole from the curse of the evil King?

IMPORTANT!

Always be sure that the power to your Odyssey² console is turned off before inserting a game cartridge. This protects the electronic components and extends the life of the unit.



TO BEGIN:

- 1 Insert the cartridge into the slot of the Odyssey² console with the label side of the cartridge facing the alpha-numeric keyboard.
- 2 Turn on the power by pressing the power button of the console. SELECT GAME will appear on your TV screen. If it does not, press the RESET key on the alpha-numeric keyboard.



On-screen colors may vary according to TV's color adjustments and system variations.

© 2019 Rafael Alexandre Cardoso da Silva

A copyright protection is claimed on the program.

Programmer / Designer: Rafael Cardoso

Cover design: Tim Cotter and Rafael Cardoso

Logistics: Tim Duarte

Manual design & production / cartridge production: Scott Stilphen

Made in USA by Atari Compendium. <http://www.ataricompendium.com/>

COLD CASE!

(One player)

An evil king has set his sights on ruling the Arctic and placed a curse upon the people of the North Pole, blocking all their igloo entrances and transforming the fish into killer king crabs. The king will only lift the curse if the people pay him tribute.

Enter local hero Tom Snow to the rescue! He has a plan to break the curse! It involves jumping on all the floating ice blocks and changing their color from white to blue.

The first time he accomplishes this feat, a magical scepter will appear before the igloo entrance. Once he picks it up, if he can change the color of the ice blocks again, the curse will finally be broken!

- 1 At the SELECT GAME screen, press any key. The title screen for COLD CASE will appear.

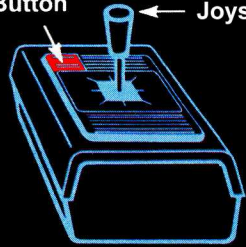


2 COLD CASE is controlled by the left hand controller.

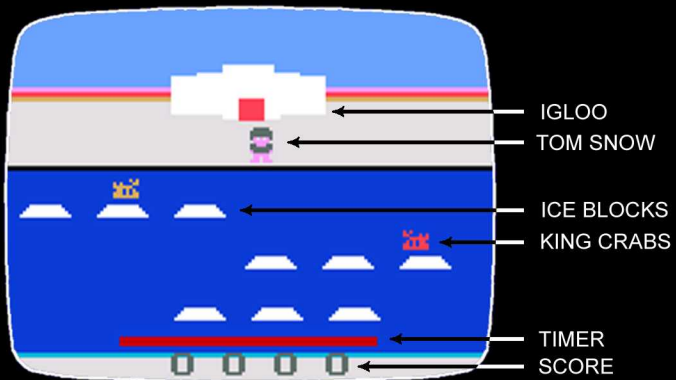
3 Push the joystick up to start the game. The action button is used to restart a game.

4 Use the joystick to move Tom Snow around. To jump on an ice block, move up or down when it is directly above or below you.

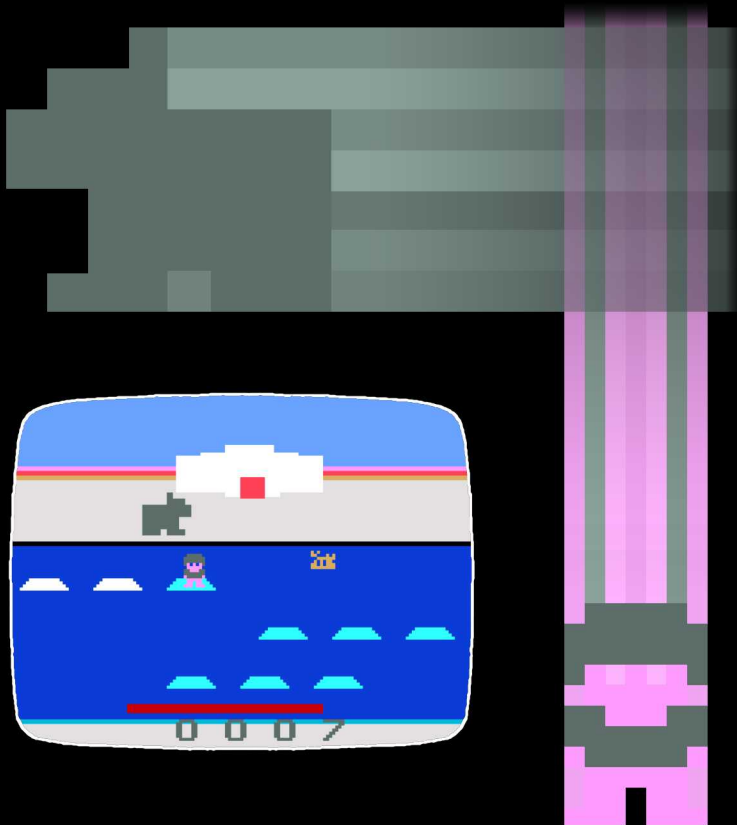
Action Button ← Joystick



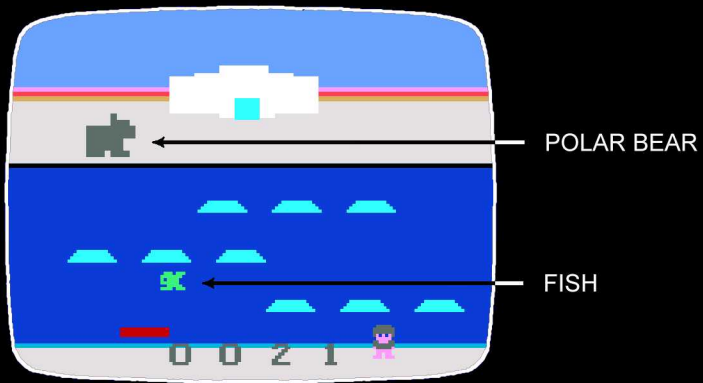
Hand control



- 5 You can move around on the ice blocks but be careful not to fall off one, or between two of them.
- 6 While on an ice block, keep an eye out for killer king crabs swimming by.
- 7 The ground at the top of the screen is also home to a grizzly polar bear that can approach from either side of the screen.



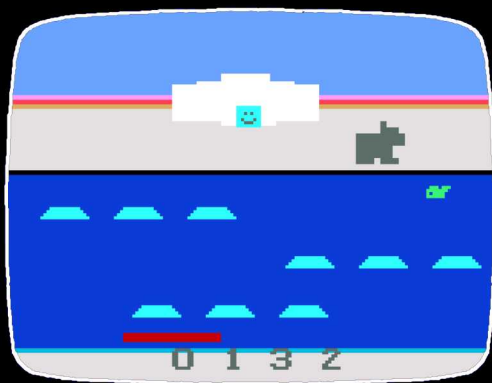
- 8 You can also jump onto and move around on the ground on the bottom of the screen.
- 9 The first time you change the color of all the ice blocks, a magic scepter will appear in front of your igloo. Grab it!
- 10 The second time you change the color of all the ice blocks, all the killer king crabs will turn into fish. Catch as many as you can for extra points!



- 11 There's only 1 Tom Snow, and he can be lost if he falls into the Arctic Sea, gets eaten by a polar grizzly, pinched by a killer king crab, or stays outside too long. So be careful, and be quick!
- 12 When the evil king's curse is broken, the igloo's entrance will turn from red to blue. Enter the igloo before time expires to end the level. Higher levels offer more challenges!

Scoring:

CHANGING ICE BLOCK COLOR 1 POINT
CATCHING A FISH 3 POINTS



RC 019



© 2019 Rafael Alexandre Cardoso da Silva

Thanks to the following people:

Carlos Bragatto, Ivan Machado, Leandro Camara, Leonardo Biagi, Márcio Rodrigues, Marc Verraes, Mark Guttenbrunner, René Van Den Enden, Ricardo Silva, Robbert Jansen, Scott Stilphen, Tim Cotter, Tim Duarte, and Victor E. J. S. Vicente.

Odyssey is a Trademark of The Magnavox Company.